

Excavator 2 boom pieces

PAT-Krüger Safe Load
Limiter Excavator SLL E1



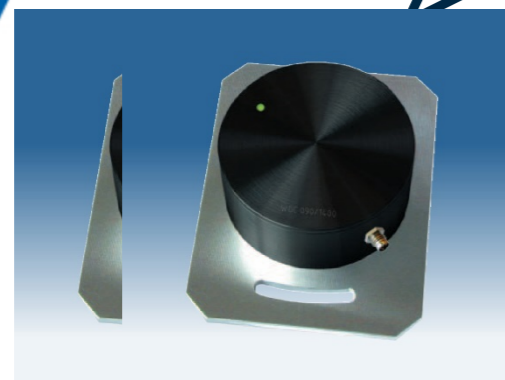
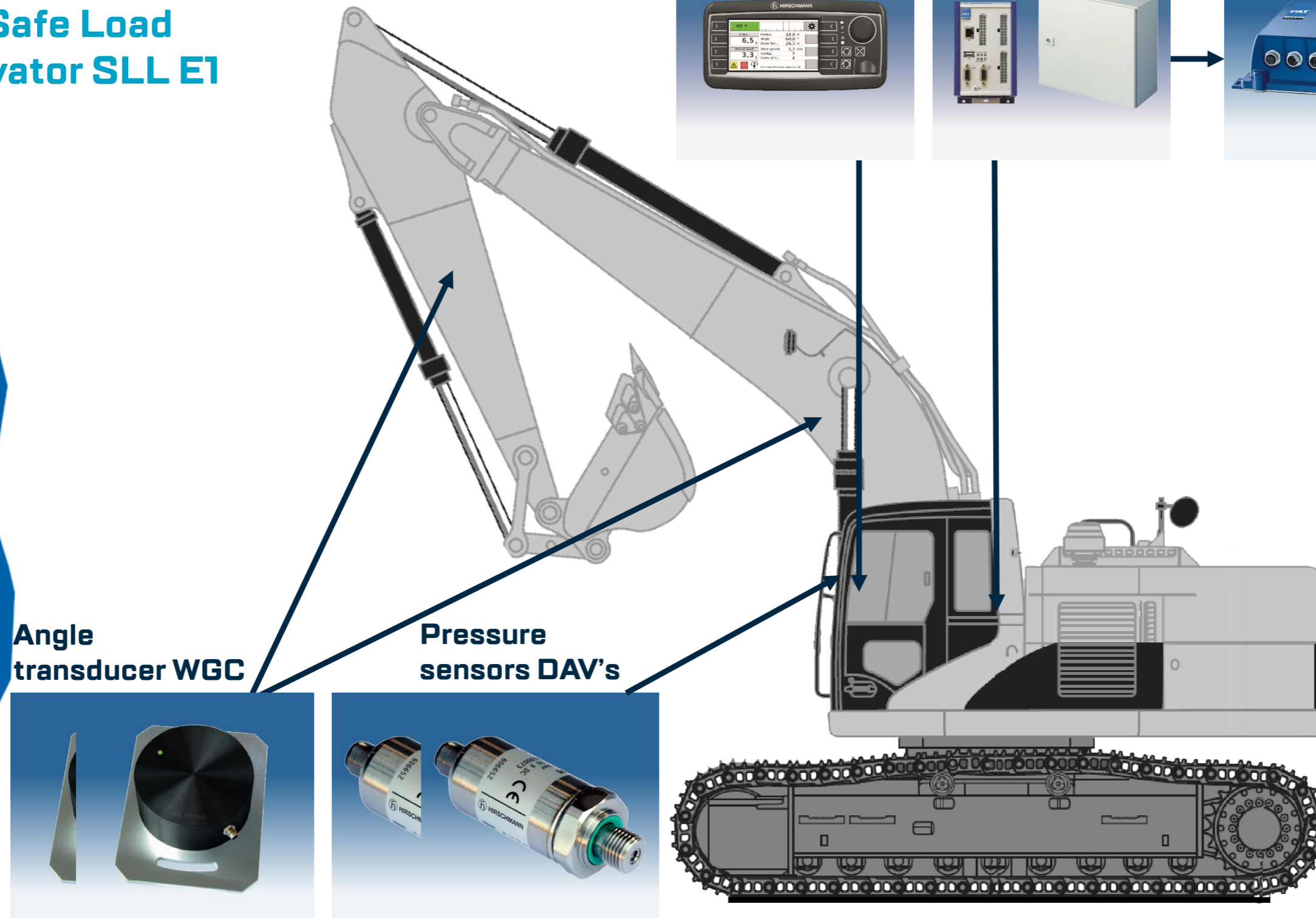
Display



Central unit



Alternative
Or IP66/67



System components:

- 1x Display D2 SLL E1
- 1x Central unit SLL E1
- 2x Angle transducer WGC
- 2x Pressure transducers

Options: Camera systems, remote data access, Windspeed measurement etc.

Scope of delivery

1x Display SLL E1

1x Central unit SLL E1

2x Angle transducer WGC

2x Pressure transducer

1x Software (max. 40 load charts)

1x Documentation

Remarks:

- We assume that a cut-off relay is available on the crane, we supply the signal.
- Welding is not included and should be arranged by you.
- All further options on requests
- Test weight will be arranged by you
- Cabling is not included



PAT-Krüger systems BV
The Netherlands (HQ)
Mangaan 6
5234 GD 's-Hertogenbosch

Tel.: +31 73 644 33 66
www.pat-kruger.com
info@pat-kruger.com

PAT-Krüger systems GmbH
Germany
Im Löwental 66
45239 Essen

Tel.: +49 201 408 610
Fax.: +49 201 408 6149
info@pat-kruger.de

PAT-Krüger systems ME
Middle East
Jebel Ali
P.O. Box 61162, Dubai
South Zone 2 WH-FZ-S2-AA-008
UAE
Tel.: +971 4 886 2320
Fax.: +971 4 886 2235
info@pat-kruger.ae

PAT-Krüger systems Ltd
United Kingdom
Wolsely Court Towers Bus. Park
Wheelhouse Road
WS15 1UW Rugeley, SFD.
United Kindom
Tel.: +44 1889 58 0101
Fax.: +44 1889 58 5885
info@pat-kruger.co.uk